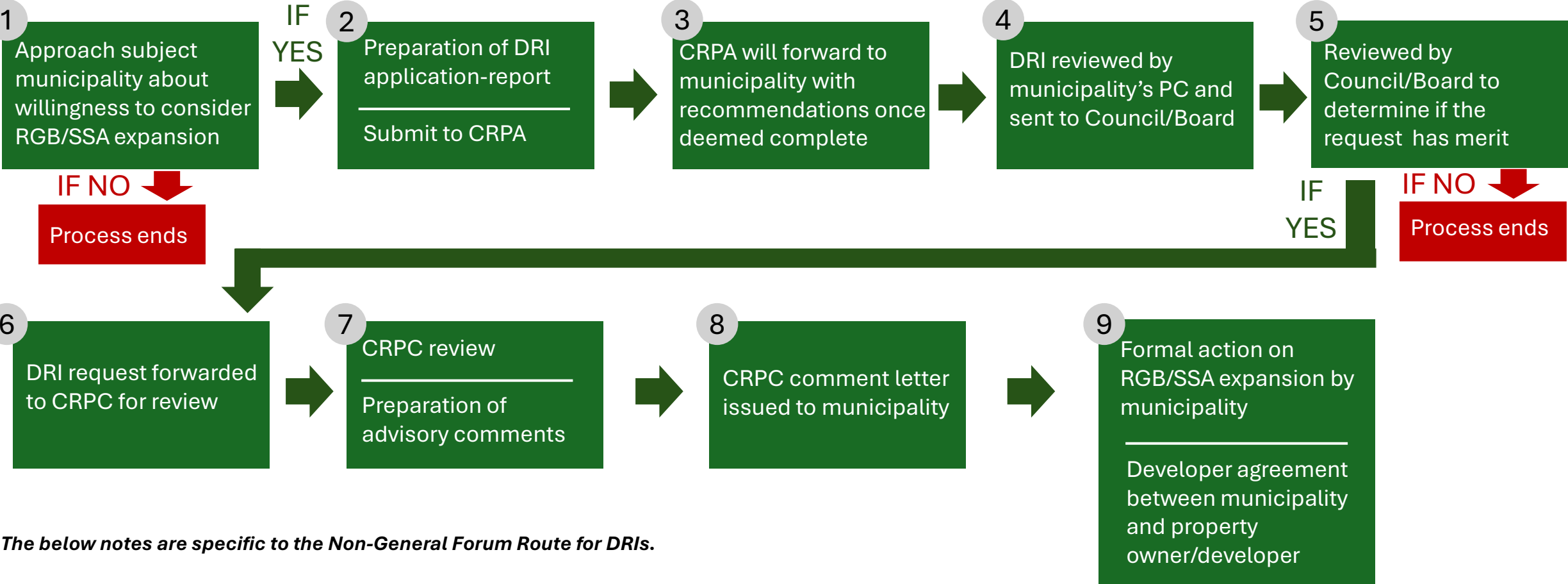


Minor DRIs: Non-General Forum Route for Development of Regional Impact Applications



The below notes are specific to the Non-General Forum Route for DRIs.

**Each municipality is authorized to expand the RGB/SSA by a maximum of 50 EDUs, not to exceed 12 acres, for a period of five years from Implementation Agreement execution.*

**Non-residential projects limited to max. sq. ft. that would generate fewer than 100 vehicle trips during peak hour or fewer than 750 trips in an average day.*

**Must achieve a minimum development density greater than one EDU per acre.*

**Requests must be contiguous to the existing RGB/SSA.*