

PENNSYLVANIA MEDICAL MARIJUANA

"The Pennsylvania Department of Health is in the process of implementing the state's Medical Marijuana Program, signed into law on April 17, 2016. When fully implemented, the Medical Marijuana Program will provide access to medical marijuana for patients with a serious medical condition through a safe and effective method of delivery that balances patient need for access to the latest treatments with patient care and safety.

The Medical Marijuana Program will also promote high quality research into the efficacy of medical marijuana in treating a patient's serious medical condition."

-Commonwealth of Pennsylvania

AREAS OF FOCUS PERTAINING TO THE PENNSYLVANIA MEDICAL MARIJUANA PROGRAM:

Medical conditions that are recognized under Act 16 of 2016 (Pennsylvania Medical Marijuana Act)

- Amyotrophic Lateral Sclerosis
- Autism
- Cancer
- Crohn's Disease
- Damage to the nervous tissue of the spinal cord with objective neurological indication of intractable spasticity
- Epilepsy
- Glaucoma
- HIV (Human Immunodeficiency Virus)/ AIDS (Acquired Immune Deficiency Syndrome)
- Huntington's Disease
- Inflammatory Bowel Disease
- Intractable Seizures
- Multiple Sclerosis
- Neuropathies
- Parkinson's Disease
- Post-traumatic Stress Disorder
- Severe chronic or intractable pain of neuropathic origin or severe chronic or intractable pain in which conventional therapeutic intervention and opiate therapy is contraindicated or ineffective
- Sickle Cell Anemia

- Dispensaries
- Grower/Processors
- Patients



DISPENSARIES

Dispensaries dispense medical marijuana products to registered patients and caregivers for the treatment of serious medical conditions. One benefit of having a dispensary is maintaining a clean, efficient, secure, and safe facility to ensure that medical marijuana products are not diverted from patients/caregivers. Every dispensary must employ either a physician or pharmacist who has completed the required training and is registered with the Department of Health. A medical professional must be present during all hours of operation to provide assistance and advise all patients. A practitioner or physician may not issue a patient certification at the dispensary facility. In Phase 1, Pennsylvania's Department of Health issued 12 grower/processor permits split evenly across 6 regions. Twenty-seven dispensary permits were issued with distribution across the state based on population and other various factors.

DISPENSARIES MAY NOT BE LOCATED:

- Within 1,000 feet of the property line of a public, private, or parochial school or a day-care center.
 - At the same site used for growing/processing medical marijuana.
 - In the same office space as a practitioner or other physician.
- ❖ From a municipal zoning standpoint, medical marijuana facilities both dispensaries and grower/processor sites, shall be zoned within the commercial-type districts and may be permitted within certain light industrial areas as well.

PERMITTED FORMS OF MEDICAL MARIJUANA

- Pill
- Oil
- Tropical forms, including gel, creams, or ointments
- A form medically appropriate for administration by vaporization or nebulization
- Tincture
- Liquid

NOT PERMITTED

- Dried Leaves
- Plant Material
- Edibles

Pennsylvania Department of Health Medical Marijuana Regions



FOR FURTHER INFORMATION AND CHECKLIST REQUIREMENTS VISIT:
[Dispensary Operational Checklist](#)



Dispensary Example: Ground Swell
Denver, CO

GROWERS/ PROCESSORS

Growers/Processors maintain the proper facilities to securely and safely cultivate the growth of medical marijuana plants and then transform those plants into marijuana products for the safe use of patients.

Employee's will work in a secure facility with video surveillance and badge access to the building and to specific areas. No one under the age of 18 is allowed on the premises, and any visitor must gain special permission to be on site.

Department of Health officials and inspectors may visit the facility at any time to ensure statutory and regularly compliance.



GROWER/PROCESSOR CAN INCLUDE:

- Horticulture
- Extraction
- Processing
- Transportation
- Administrative Functions

**FOR FURTHER INFORMATION AND
CHECKLIST REQUIREMENTS VISIT:**

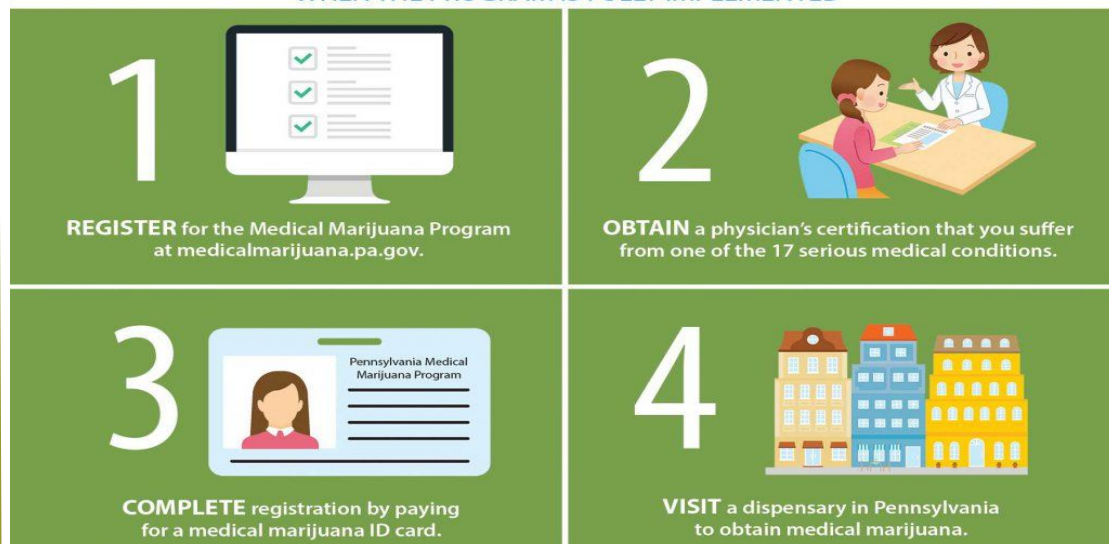
[Growers and Processors Checklist](#)

PATIENTS

REQUIREMENTS:

1. Have a serious medical condition.
2. Meet the requirements for certification under the act.
3. Be a resident of the Commonwealth of Pennsylvania.

HOW PATIENTS CAN GET MEDICAL MARIJUANA IN PENNSYLVANIA WHEN THE PROGRAM IS FULLY IMPLEMENTED



FOR FURTHER INFORMATION PERTAINING TO MEDICAL MARIJUANA WITHIN THE COMMONWEALTH OF PENNSYLVANIA, PLEASE VISIT:

**PENNSYLVANIA MEDICAL MARIJUANA PROGRAM
WEBPAGE**

<https://www.pa.gov/guides/pennsylvania-medical-marijuana-program/#GrowersandProcessors>

Sources:

www.pa.gov/guides/pennsylvania-medical-marijuana-program

www.Health.pa.gov

*Strassburger McKenna Gutnick & Gefsky
Pennsylvania Medical Marijuana Program
State of Colorado
State of Illinois*

CENTRE REGIONAL PLANNING AGENCY

2643 GATEWAY DRIVE
STATE COLLEGE, PA 16801
(814) 231-3050