

The Centre Region Comprehensive Plan

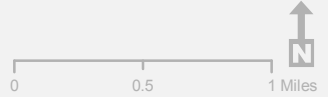
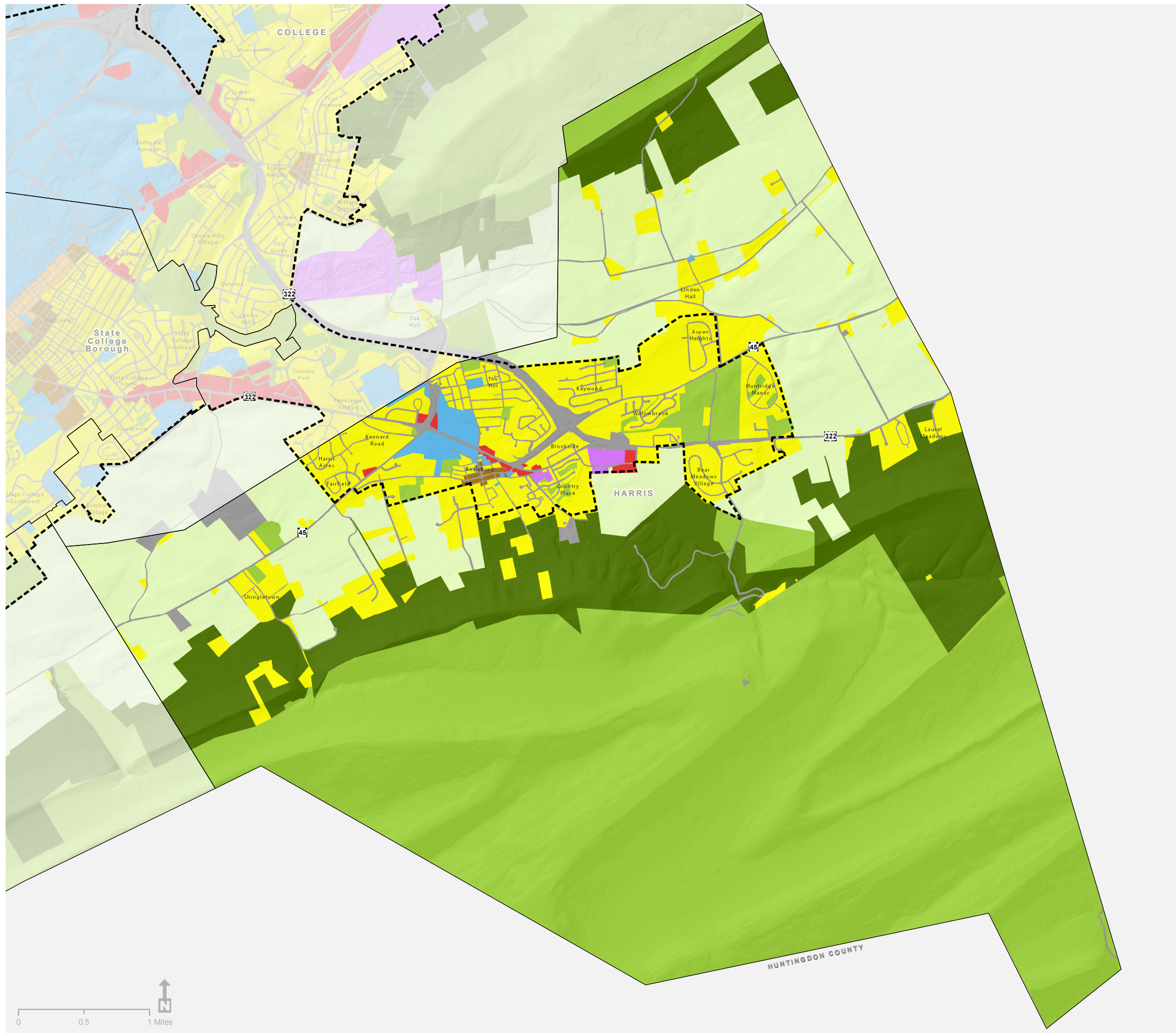
Future Land Use Harris Township

Future Land Use

- Agriculture
- Commercial/Office
- Downtown District
- Forest
- Industrial/Office
- Mixed Use
- Parks/Recreation/Conservation
- Public/Institutional
- Residential
- Transportation/Communication/ Utilities

Regional Features

- Regional Growth Boundary/ Sewer Service Area
- Municipal Boundary



Projection: PA State Plane NAD 83, North Zone
 Prepared by: Steven Arnold - Geospatial Technology Program
 at Penn State for the Centre Regional Planning Agency
 Date: 7/22/2013
 Data Source: Centre County GIS, USGS, The Centre Regional
 Planning Agency, Geospatial Technology Program at Penn State.