

The Centre Region Comprehensive Plan

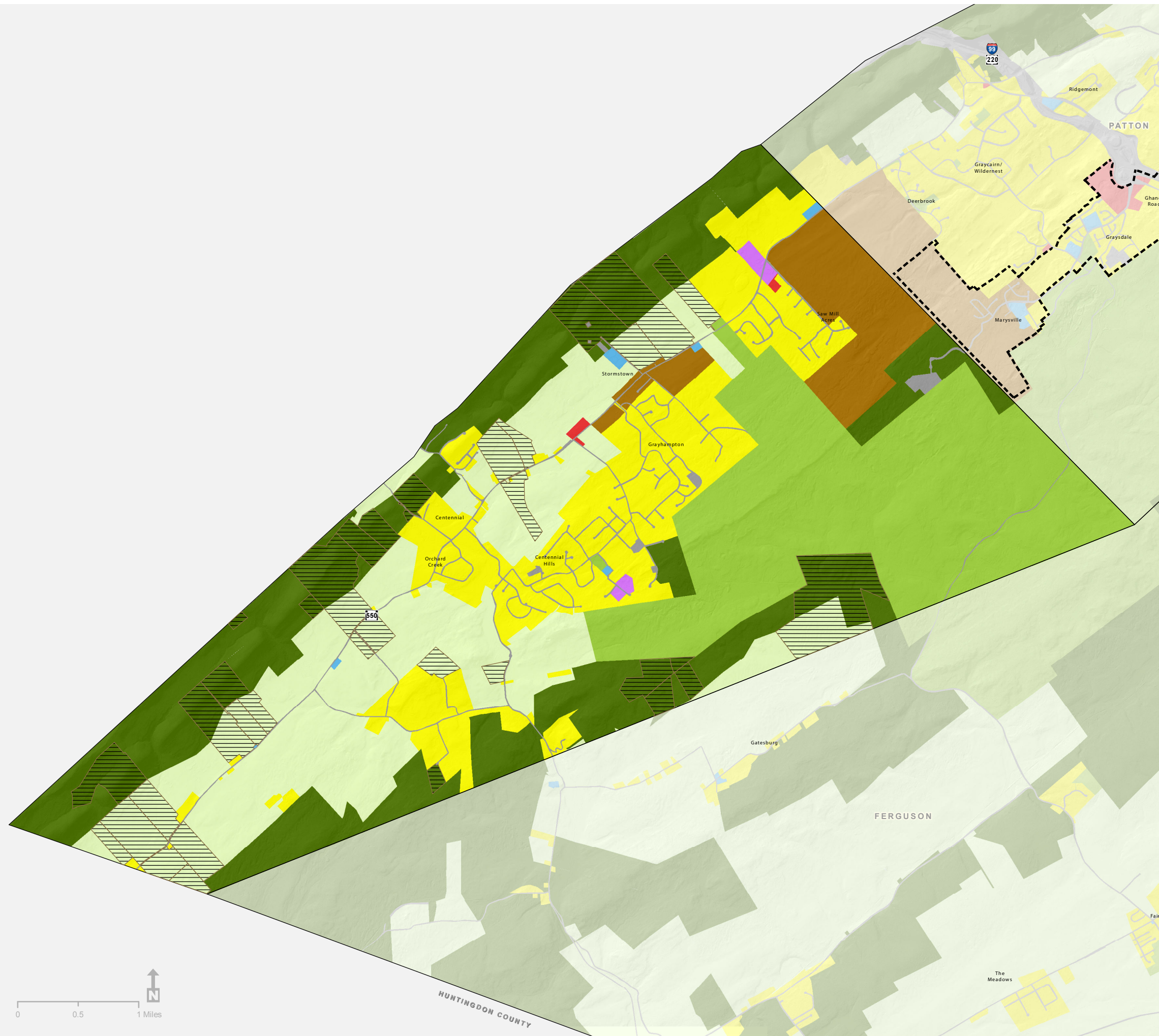
Future Land Use Halfmoon Township

Future Land Use

- Agriculture
- Commercial/Office
- Downtown District
- Forest
- Industrial/Office
- Mixed Use
- Parks/Recreation/Conservation
- Public/Institutional
- Residential
- Transportation/Communication/ Utilities
- Leased Easement

Regional Features

- Regional Growth Boundary/ Sewer Service Area
- Municipal Boundary



Projection: PA State Plane NAD 83, North Zone
Prepared by: Steven Arnold - Geospatial Technology Program
at Penn State for the Centre Regional Planning Agency
Date: 7/22/2013

Data Source: Centre County GIS, USGS, The Centre Regional
Planning Agency, Geospatial Technology Program at Penn State.