



# Centre Region Council of Governments Refuse & Recycling Newsletter

## JANUARY 2024

### DATES TO NOTE

#### 2024 Dates to Note:

- January 1  
New Year's Day
- May 27  
Memorial Day
- July 4  
Independence Day
- September 2  
Labor Day
- November 28  
Thanksgiving Day
- December 25  
Christmas Day

If your collection day occurs on or after the holiday, collection will be delayed one day for the rest of that week. These are the only holidays for our collection workers!

#### Other Dates:

- Christmas Tree Collection  
January 8-12 ONLY

Please see details in this newsletter.

#### Global Recycling Day



**March 18, 2024**

30% Post-Consumer Content

### WINTERY WEATHER CONDITIONS

When **Extreme Weather** poses a safety hazard to collection employees or residents, trash and recycling collection may be suspended or delayed. Keep informed about delays:

- WM sends text and phone blast alerts. Sign up for service alerts through your online account under "managing your preferences."
- Centre Region COG sends email alerts and posts service delays and suspensions on our website. Visit the website to sign up for or to see alerts at [www.crcog.net/refuse](http://www.crcog.net/refuse)



### SPECIAL COLLECTION FOR CHRISTMAS TREES

WM residential customers in Benner, College, Ferguson, Harris, and Patton Townships can have their Christmas trees collected at the curb for recycling and delivered to the State College Borough Compost Facility.

January 8 - 12, 2024 ONLY

- Trees will be collected on your regular collection day this week only.
- Have your tree to the curb by 7 a.m.
- Please: no bags, tarps, lights, stands, or decorations (and no artificial trees).
- If the tree is taller than 6 feet, it must be cut to 6-foot lengths.
- Trees must be free of ice and snow. \*

\* Keep your tree free from ice and snow by leaving it in a covered area until the day of collection. Trees stuck to the ground or buried in ice or snow will not be collected.

**Refuse & Recycling (814) 234-7198 | email: [recycler@crcog.net](mailto:recycler@crcog.net) | [www.crcog.net/refuse](http://www.crcog.net/refuse)**



## REDUCE, REUSE, RECYCLE: WHY IT MATTERS

It helps conserve our land: landfills have a pretty large footprint, and no one wants them in their back yards. And believe it or not, Pennsylvania is running low on landfill space.

It reduces our greenhouse gas emissions and pollutants: collecting and then transporting our waste to a landfill results in a lot of emissions, as well as the emissions and pollution involved in extracting the fuels that run those trucks.

It saves energy: producing goods from recycled materials typically requires less energy than manufacturing using virgin materials. And reducing our energy consumption can help stabilize energy costs, reduce air pollution, decrease our reliance on fossil fuels, and make our energy grids and costs less volatile.

It helps sustain our economy: Pennsylvania's recycling industry is responsible for supporting over 26,000 jobs and more than \$680 million in annual employee earnings. Overall, the recycling industry contributes more than \$4.2 billion per year to Pennsylvania's economy.

It means more jobs for Pennsylvanians: recycling creates nine times more, composting twice as many, and reuse through donations up to 30 times more jobs than landfilling our waste.

To learn more about ways to reduce your waste, easily recycle everything that can be recycled, and donate your stuff for reuse, visit [www.crcog.net/refuse](http://www.crcog.net/refuse) and click on the "How Low Can You Go" infographic.

## SOLAR PV DEVELOPMENT IN CENTRE COUNTY

A 12-member intergovernmental working group is investigating and pursuing an aggregated power purchase agreement (PPA) that is expected to result in the building of a 20MW solar array in Centre County.

### Why pursue a PPA?

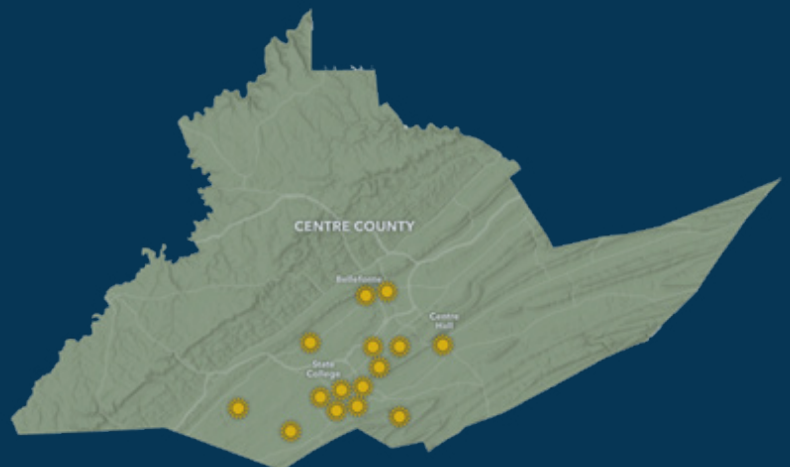
- By pooling our electricity together, it creates a better economy of scale.
- Rates proposed are cost competitive with current power prices and are very likely to beat future energy prices.
- Locking in low energy prices for 15 years can reduce the risk of market fluctuations.
- Some members have clean energy goals, and this will help to achieve those goals.

### What is a PPA?

A contract between an energy buyer and a solar developer for a specific amount of electricity. Payments are fixed at a competitive market rate per MWh with a 1.5% escalator. Solar energy is delivered from the solar array owned and operated by the developer to a predetermined point on the grid within our local electricity market where the working group then takes title to the energy.

For more information visit [www.crcog.net/sppa-project](http://www.crcog.net/sppa-project)

**Who is participating --->**



centreregionalplanning



CentreRegionCOG