

The Centre Region's network of shared use paths create connections between the places where we live, work and play. The paths are used for both transportation and recreation by walkers, joggers, bikers and skaters.

The Region's network is a place for people and pets, not motorized vehicles. All of the path users move in different ways and at different speeds. We want our paths to be safe for everyone.

To make our shared use paths safer, please take some time to review this brochure and familiarize yourself with the Centre Region's rules. For more information about bicycle facilities go to www.crcog.net and click on this logo:



We all know it's important to share the road - but it's just as important to share the path.



Centre Regional Planning Agency

2643 Gateway Drive
State College, PA 16801
814-231-3050
www.crcog.net/planning

In Cooperation with:

College Township
Ferguson Township
Halfmoon Township
Harris Township
Patton Township
State College Borough



In Pennsylvania the law requires bicyclists...



WEAR a helmet if you are under 12 years of age. This law also applies to children who are passengers in a bike seat or bike trailer.



USE lights between sunset and sunrise. If you ride at night your bike must be equipped with a white front light that illuminates at least 500 feet and a rear facing red reflector that is visible from 500 feet.



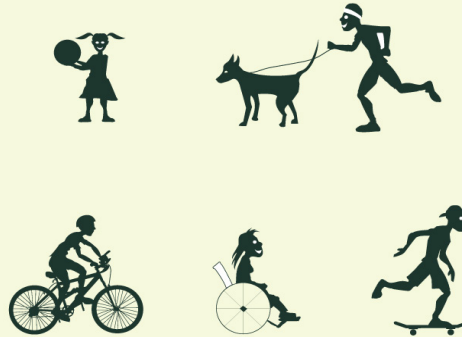
PROVIDE an audible signal while passing others on a path or sidewalk. An audible signal can be a bell or you can call out "Passing on your left."



YIELD the right-of-way to pedestrians while riding on a shared use path.

It is against the law to use headphones while riding a bike in Pennsylvania.

Be Respectful of All Users

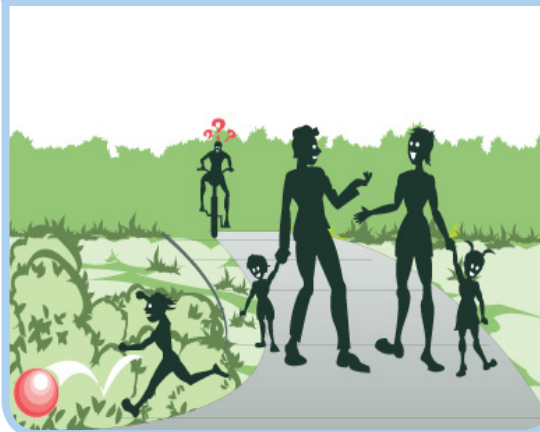


Wear a Helmet

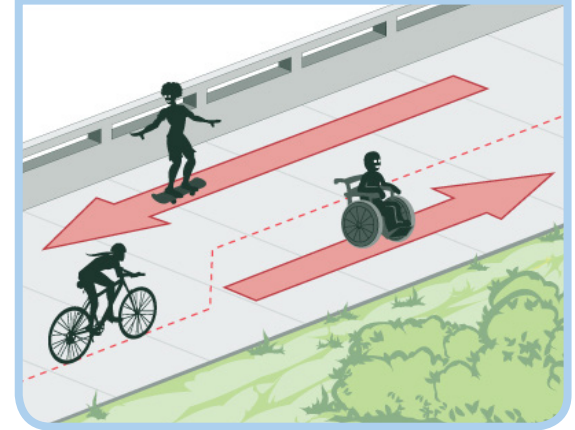


**It's the Law
for Children Under 12**

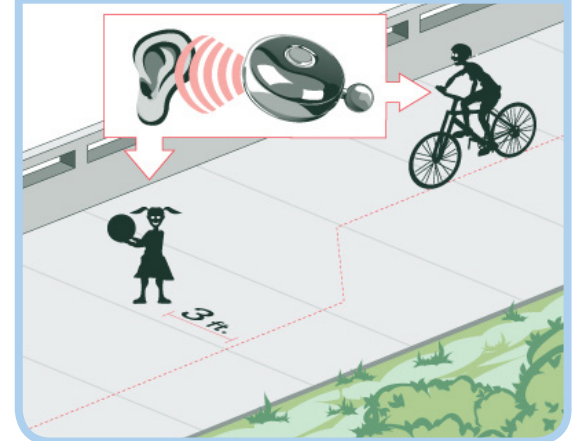
Do Not Block Trail



Keep Right Unless Passing



Use Audible Warnings When Passing



Use Lights When Dark



Safety graphics courtesy of city of Portland, Oregon Bureau of Transportation